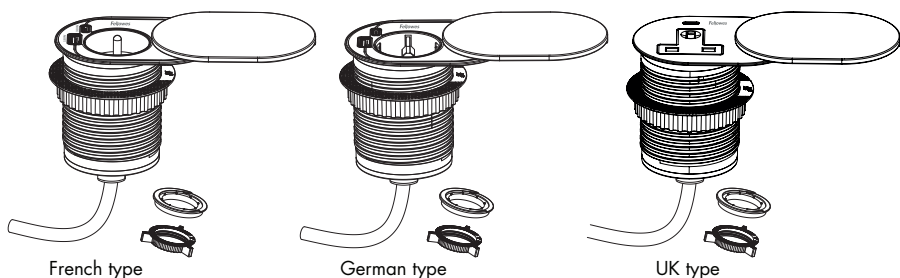


Fellowes.

Grommet Power



PLEASE READ INSTRUCTIONS BEFORE USE.
DO NOT DISCARD.

LIRE LES INSTRUCTIONS AVANT UTILISATION.
NE PAS JETER.

LEA LAS INSTRUCCIONES ANTES DE SU
USO. NO TIRAR.

BITTE LESEN SIE DIE ANLEITUNGEN SORGFÄLTIG
DURCH, BEVOR SIE DAS GERÄT BENUTZEN.
BITTE GUT AUFBEWAHREN.

LEGGERE LE ISTRUZIONI PRIMA DELL'USO.
NON GETTARE.

LEES DE INSTRUCITIES VOOR GEBRUIK.
NIET WEGWERPEN.

LÄS DESSA INSTRUKTIONER FÖRE ANVÄNDNING.
KASSERA EJ.

PRZED UŻYCIEM PROSZĘ PRZECZYTAĆ NINIEJSZĄ
INSTRUKCJĘ. NIE WYRZUCAĆ.

ПЕРЕД ИСПОЛЬЗОВАНИЕМ ПРОСЬБА ОЗНАКОМИТЬСЯ
С ИНСТРУКЦИЯМИ. НЕ ВЫБРАСЫВАТЬ.

LEIA AS INSTRUÇÕES ANTES DA UTILIZAÇÃO.
NÃO AS ELIMINE.

SAFETY INSTRUCTIONS/WARNING

Directions for safety use

Before connecting and using the device, read this Operating Manual and keep it for future reference. In case something written herein is unclear, please contact the seller. The manufacturer is not responsible for any damage that can result from improper device installation or operation.

Before you plug in the device, please make sure that electric circuit parameters comply with its technical specification. In case of wire damage, safely unplug it straight off. Do not use the device when its wire is damaged. It should be replaced by professional electrician.

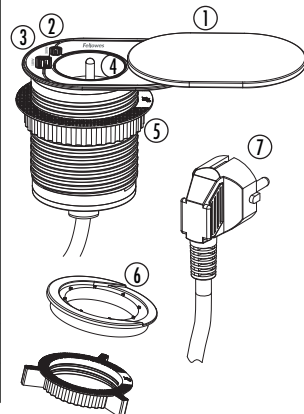
1. Disconnect power supply before any activities on the product.
2. Do not immerse the device in water or other fluids.
3. Do not operate the device when its housing or wire is damaged.
4. Do not open the device and do not repair it by yourselves.
5. Do not use the device contrary to its original purpose.
6. Keep out of reach of children.
7. Avoid contact with water and other electric conductors (e.g. metals).
8. Protection class I.
9. The product is intended for indoor use.
10. The product compliant with CE standards.

Safety and Maintenance

- Maintenance should be carried out with power disconnected.
- Clean only with delicate and dry fabrics.
- Do not use chemical cleaners.
- Do not cover the product.
- Provide free air access.
- Protect the wires against breaking, tearing, excessive bending and other hazardous activities that can cause damage to the wiring insulation.

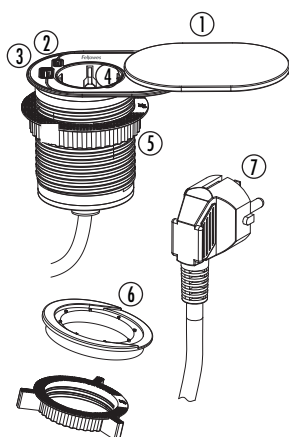
CAPABILITIES — FRENCH TYPE

Port	Description	Specifications
1	Sliding cover	Sliding cover for dust & spillage protection.
2	USB Port (Type C) Fast Charging	5.0V---3.0A, 15.0W; 9.0V---3.0A, 27.0W; 12.0V---2.5A, 30.0W 15.0V---2.0A, 30.0W; 20.0V---1.5A, 30.0W Max.
3	USB Port (Type A) Fast Charging	5.0V---3.0A, 15.0W; 9.0V---2.0A, 18.0W; 12.0V---1.5A, 18.0W Max.
4	Socket	Input: 230V~, 50Hz Maximum load: 3680W Sockets: 1 x 16A
5	Mounting ring	∅ 60mm mounting ring
6	∅ 80mm adapter ring	∅ 60mm transfer to ∅ 80mm
7	Cable	H05VV-F 3G1.5mm ² 2m



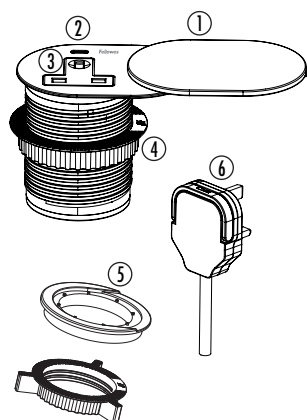
CAPABILITIES — GERMAN TYPE

Port	Description	Specifications
1	Sliding cover	Sliding cover for dust & spillage protection.
2	USB Port (Type C) Fast Charging	5.0V---3.0A, 15.0W; 9.0V---3.0A, 27.0W; 12.0V---2.5A, 30.0W 15.0V---2.0A, 30.0W; 20.0V---1.5A, 30.0W Max.
3	USB Port (Type A) Fast Charging	5.0V---3.0A, 15.0W; 9.0V---2.0A, 18.0W; 12.0V---1.5A, 18.0W Max.
4	Socket	Input: 230V~, 50Hz
		Maximum load: 3680W
		Sockets: 1 x 16A
5	Mounting ring	∅ 60mm mounting ring
6	∅ 80mm adapter ring	∅ 60mm transfer to ∅ 80mm
7	Cable	H05VV-F 3G1.5mm ² 2m



CAPABILITIES — UK TYPE

Port	Description	Specifications
1	Sliding cover	Sliding cover for dust & spillage protection.
2	USB Port (Type C) Fast Charging	5.0V---3.0A, 15.0W; 9.0V---3.0A, 27.0W; 12.0V---2.5A, 30.0W 15.0V---2.0A, 30.0W; 20.0V---1.5A, 30.0W Max.
3	Socket	Input: 240V~, 50Hz
		Maximum load: 3120W
		Sockets: 1 x 13A
4	Mounting ring	∅ 60mm mounting ring
5	∅ 80mm adapter ring	∅ 60mm transfer to ∅ 80mm
6	Cable	H05VV-F 3G1.25mm ² 2m

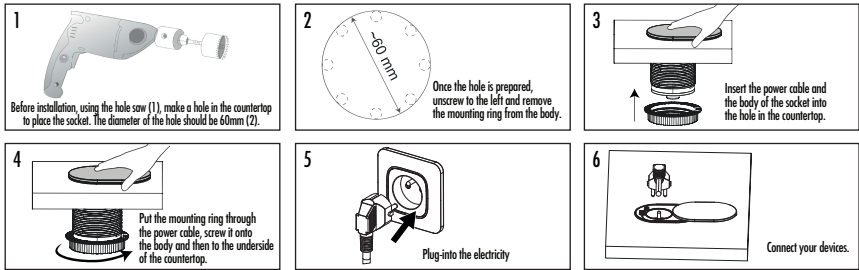


PARTS PROVIDED

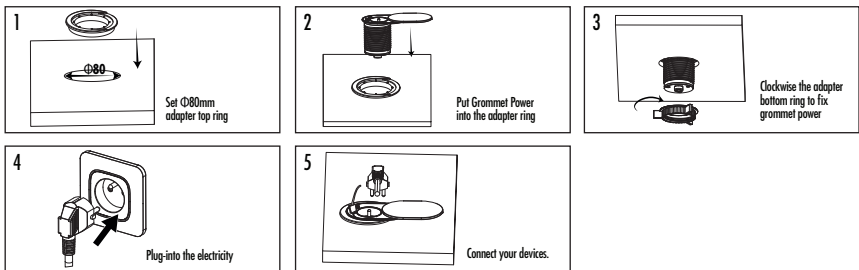
A Grommet Power B $\varnothing 80$ mm adapter ring

INSTALLATION — FRENCH TYPE

If your existing desk hole is $\varnothing 60$ mm or without hole.

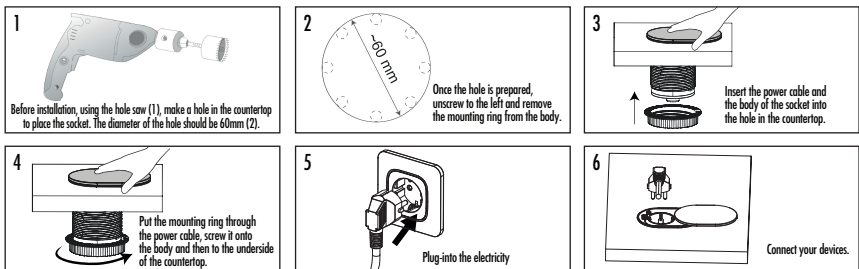


If your existing desk hole is $\varnothing 80$ mm

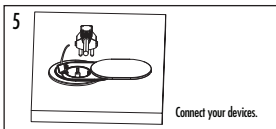
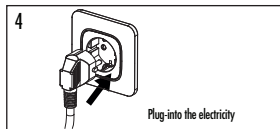
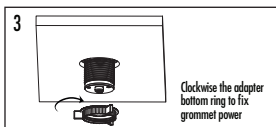
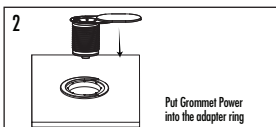
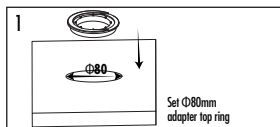


INSTALLATION — GERMAN TYPE

If your existing desk hole is $\varnothing 60$ mm or without hole.

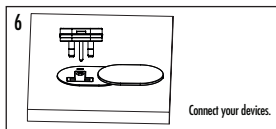
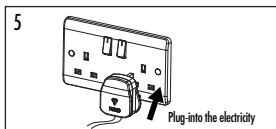
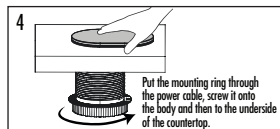
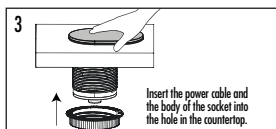
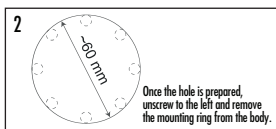
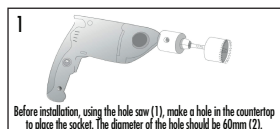


If your existing desk hole is $\varnothing 80\text{mm}$

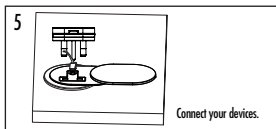
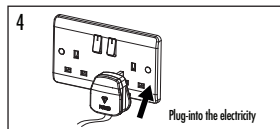
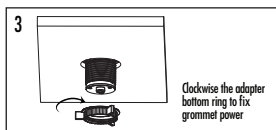
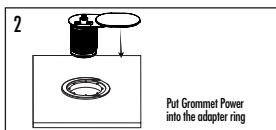
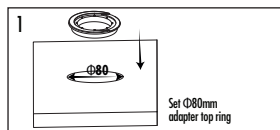


INSTALLATION — UK TYPE

If your existing desk hole is $\varnothing 60\text{mm}$ or without hole.



If your existing desk hole is $\varnothing 80\text{mm}$



TECHNICAL SPECS AND DOC — FRENCH TYPE

Type	French
Model No.	PGC09P
Import Address	Fellowes Holdings B.V. Gesworenohoekseweg 3a 5047 TM Tilburg The Netherlands
Commercial Registration Number	NL808405937B01
Color	White or black
Input	230 V~ / 50Hz
Maximum load	3680W
Sockets	1 x 16A
Cable specification	H05VV-F 3G1.5mm ² 2m
USB ports	1x Type-C + 1x Type-A
USB Output (Type-A)	5.0V---3.0A, 15.0W; 9.0V---2.0A, 18.0W; 12.0V ---1.5A, 18.0W max.
USB Output (Type-C)	5.0V---3.0A, 15.0W; 9.0V---3.0A, 27.0W; 12.0V---2.5A, 30.0W; 15.0V---2.0A, 30.0W; 20.0V---1.5A, 30.0W max.
USB Output (Type A+C)	5.0V---3.0A, 15.0W max.
Average Active Efficiency	83.4%
Efficiency at Low Load (10%)	79.0%
No-load Power Consumption	0.07W

TECHNICAL SPECS AND DOC — GERMAN TYPE

Type	German
Model No.	PGC09T
Import Address	Fellowes Holdings B.V. Gesworenohoekseweg 3a 5047 TM Tilburg The Netherlands
Commercial Registration Number	NL808405937B01
Color	White or black
Input	230 V~ / 50Hz
Maximum load	3680W
Sockets	1 x 16A
Cable specification	H05VV-F 3G1.5mm ² 2m
USB ports	1x Type-C + 1x Type-A
USB Output (Type-A)	5.0V---3.0A, 15.0W; 9.0V---2.0A, 18.0W; 12.0V ---1.5A, 18.0W max.
USB Output (Type-C)	5.0V---3.0A, 15.0W; 9.0V---3.0A, 27.0W; 12.0V---2.5A, 30.0W; 15.0V---2.0A, 30.0W; 20.0V---1.5A, 30.0W max.
USB Output (Type A+C)	5.0V---3.0A, 15.0W max.
Average Active Efficiency	83.4%
Efficiency at Low Load (10%)	79.0%
No-load Power Consumption	0.07W

TECHNICAL SPECS AND DOC — UK TYPE

Type	UK
Model No.	PGC09V
Import Address	Fellowes Holdings B.V. Gewoerenhoekseweg 3a 5047 TM Tilburg The Netherlands
Commercial Registration Number	NL808405937B01
Color	White or black
Input	240 V~ / 50Hz
Maximum load	3120W
Sockets	1 x 13A
Cable specification	H05VV-F 3G1.25mm ² 2m
USB ports	1x Type-C
USB Output (Type-C)	5.0V---3.0A, 15.0W; 9.0V---3.0A, 27.0W; 12.0V---2.5A, 30.0W; 15.0V---2.0A, 30.0W; 20.0V---1.5A, 30.0W max.
Average Active Efficiency	XX.X%
Efficiency at Low Load (10%)	XX.X%
No-load Power Consumption	X.XXW

FELLOWES GROMMET POWER 2-YEAR LIMITED WARRANTY

